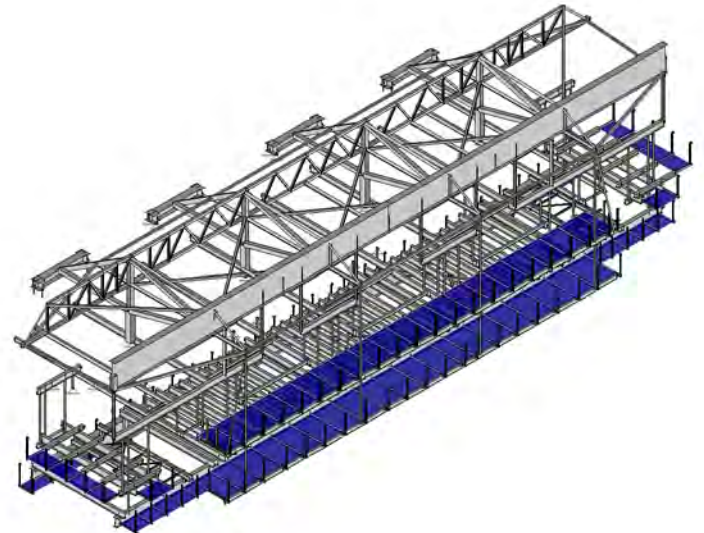


## Pearl Harbor Memorial Bridge - Form Traveler with Four Main Frames

### Extradosed, Cast-in-Place Bridge over the Quinnipiac River



**Structural analysis, design verification, pour deflections, loading on bridge, field inspections and technical assistance.**

**Segment Data:**

- Weight - 735 kip
- Length - 14.3 ft
- Width - 108 ft

- Project - Pearl Harbor Memorial Bridge
- Location - New Haven, Connecticut
- Year - 2011
- Type - Form Traveler
- Owner - Connecticut DOT
- GC - Walsh PCL JV II
- Client - Schwager Davis Inc.

